



WIFV NEWS

October 2016

President's Message



Bustamante & Moore

Why does my life matter? This is the question that Wes Moore tackles in his book, *THE WORK*. Today I heard him recount, in person, how his mother continually threatened him with military school if he didn't straighten up when he

was growing up in Baltimore. And then one day, when he was thirteen years old, took him - to his surprise - to a military school in Pennsylvania. When he tried to run away (five times in four days), his mother told him that too many people believed in him, too many people had sacrificed for him to be there, and that sometimes, "it's not about you".

Although I'm not a widow with three children like Ms. Moore, I am a single mother of a child with special needs, and some of the mother-son exchanges struck a chord with me. As a parent, it's those moments of tough love that are the hardest. And for our children, it can mark the beginning of self-reliance and true independence, although they may not recognize it at the time. (At the time, they may hate you, or at least think they do.)

THE WORK starts many years later when Moore is no longer a child, but a young man in his 20s. The narrative opens with his experience aboard a flight to London on "one of the first transatlantic flights granted airspace after the attacks of September 11, 2001." A Rhodes scholarship recipient headed to Oxford University, he began his journey at that moment to understanding the difference between his occupation, or place of employment, and what he calls his work. Your work, says Moore, is "that place where your greatest gifts overlap with the world's greatest needs."

"No one has whispered in my ear how much time

In This Issue

[Reel Corner Blog Wants YOU!](#)

[Happy Hour - Oct 13](#)

[Roundtable Round-Up](#)

[Strength in Unions - Oct 5](#)

[LED Lighting Demo - Oct 6](#)

[WIFV Member Coffee - Oct 18](#)

[WIFV Deadlines - Scholarships, Fiscal Sponsorships](#)

[Women of Vision Award](#)

[Hollywood 101 - Oct 26](#)

[ScriptDC - Nov 4-6](#)

[Double Exposure Festival - Oct 6-8](#)

[What's Up? Docs!](#)

[CINE Pitch Fest - Oct 18](#)

[Ramona Diaz, Documentary Inspiration Award - Oct 20](#)

[National Media Market - Oct 23-27](#)

[New Report - What Artists Need to Have Impact](#)

[Spotlight on Screenwriters Workshop - Oct 13](#)

[New and Renewing Members](#)

Roundtable Round-Up

Documentary Roundtable - Trailer Night

October 10, 2016, 6:30 to 8:30 pm

Docs House, 8700 First Ave, Silver Spring, MD

[RSVP here](#)

Screenwriters Roundtable

October 24, 2016, 6:30 to 8:30 pm

Interface Media Group, 1233 20th St, NW

[RSVP here](#)

Animation Roundtable

October 26, 2016, 6:30 to 8:30 pm

The Duke & the Duck, 1203 19th St, NW, 3rd Fl

[RSVP here](#)

Talent Roundtable

October 27, 2016, 6:30 to 8:30 pm

Interface Media Group, 1233 20th St, NW

[RSVP here](#)

I have left," Moore emphasizes. Making every day count, making his life matter, is part of his philosophy and driving energy. He also tells stories about the people who have crossed his path and impressed him with their passion, purpose, and gratitude for the opportunity to share their gifts. These are the ones "doing the work".

Women in Film & Video is an extraordinary organization that both supports and empowers you, our members, to do your "work". From documentary to narrative film and broadcast media, you are trail blazers and mountain climbers. Use your passion to change the world, for the better.

Changing media one story at a time,
Rebecca

Reel Corner Blog

Have you been keeping up with our *Reel Corner* blog? WIFV member **Flo Dwek** has been attending film screenings and interviewing filmmakers for the benefit of the WIFV community. [Click here to read her review of DENIAL](#). We are grateful for the support of **Word Wizards** for this initiative. Do you know about an upcoming screening? Write a review yourself and send it to our *Reel Corner* blog! For info on how you can submit, email membership@wifv.org.

Happy Hour - Oct 13



Sometimes the member coffee is just too early in the morning! We're meeting at **Republic, 6939 Laurel Avenue, Takoma Park**. You can have coffee if you want, it's Dutch Treat so order what you want. [RSVP here](#) so we know how many tables to save!

Strength in Unions

Wednesday, October 5, 2016

6:30 to 8:30 pm

Gompers Room, AFL-CIO, 815 16th St, NW, DC
\$15 Members / \$30 Public

[RSVP here](#)

Spend an evening with representatives from I.A.T.S.E., SAG-AFTRA and WGA to discover the value of labor unions for creative professionals. Discover how unions work on behalf of the talent in front of and behind the camera. They will discuss micro-budget projects. Come with questions!

LED Lighting Demo

Thursday, October 6, 2016, 6:00 to 8:30 pm

Barbizon Capital

6437 General Green Way, Alexandria, VA 22312

This is a FREE workshop

[Register here](#) with Oct 6 Workshop as heading.

Join Barbizon Capital and a lighting designer from guest manufacturer, Aadyntech, who will discuss best practices. Aadyntech demo fixtures will be available for guests to view. The event will be perfect for anyone interested in LED lighting in the field or studio. All skill levels will be welcomed.

WIFV and TIVA can pick up discounted expendables too! Barbizon is sponsoring the food and drinks so come early so you can enjoy the hospitality!



WIFV Member Coffee



Tuesday, October 18, 2016

8:30 - 10:00 am

Sugar Shack Alexandria

804 North Henry Street

Dutch Treat

[RSVP here](#)

WIFV Supports Members with Scholarships & More

Fiscal sponsorship applications due October 19

The WIFV Fiscal Sponsorship Program is a financial and legal system where our 501(c)(3) public charity provides limited financial and legal oversight for a project initiated independently by a filmmaker. That project must be non-commercial in nature, i.e. not produced solely for financial gain. Sponsored Projects are eligible to solicit and receive grants and tax-deductible contributions.

[Guidelines and application checklist are here.](#)

Carolyn's First Decade Fund Applications due November 17

Carolyn's First Decade Fund was established in memory of long-time WIFV member and documentary filmmaker Carolyn Projansky as a way to honor her passion for visual storytelling, commitment to education, and dedication to mentoring young filmmakers. Carolyn's First Decade Fund is designed to help advance the careers of individuals in their first decade of working as media professionals, provide them with access to continuing skills development and to the larger film community. [Application available here.](#)

Randy Goldman Career Development Scholarship Applications due November 22

WIFV offers the Randy Goldman Career Development Scholarship to WIFV Members as a way to honor WIFV Past President Randy Goldman and her creative vision, passion for education, and commitment to the larger film community. The scholarship, funded by past WIFV Presidents, enables creative women with a vision for their career paths and a need for additional focus and study in a particular field of interest, to continue their professional development. Applicants must have at least 12 years experience as a media professional. [Application form available here.](#)



Nearly 300 people were at George Mason University on September 28 to spend an evening with **Christine Vachon**, the newest WIFV Woman of Vision! **Giovanna Chesler**, FAVS-GMU Director, led the conversation which was fueled by lots of questions from the audience, the information was wide-ranging, entertaining, and inspiring. Vachon stressed that Killer Films always wants to be the "value add" to a project. She also counseled the audience to be patient with their work as the "zeitgeist is a pendulum or lazy susan, and you may need it to come back around." Her perspective about the importance of recognition and belief that the best way to balance work and family is to own your own company resonated with the audience. Ending the evening by encouraging the audience to do their best work on their current project, send it into the world, and then move on to the next one had

everyone ready to get back to work!

Event sponsors included GMU Film and Media Studies, Film and Video Studies, Photography, Women and Gender Studies, and Women in Film & Video. The program is also supported by GMU Cultural Studies and the GMU English Department.



L - Vachon receiving award from Houghton; R - Chesler and Vachon

Photos courtesy of Diane Williams and Sandra Abrams

Hollywood 101 - October 26



For producers, writers, and directors (and those who intend to become one or more of these). Writer/producer **Monica Lee Bellais** and entertainment lawyer **Paige Gold**, both Los Angeles expats, will discuss the basics of working with the Los Angeles entertainment industry. Come with questions!

Wednesday, October 26, 2016 - 6:30 pm networking; 7:00 pm presentation
Interface Media Group, 1233 20th Street, NW (Dupont South Metro)
\$15 Members / \$30 Public [RSVP here](#)



November 4-6, 2016
American University

ScriptDC is the premier conference for Mid-Atlantic writers, producers, directors, and talent to achieve their creative dreams by connecting them with accomplished teachers, consultants and industry professionals. Documentary, Features, Episodic Television will all be discussed. The 2016 edition will be November 4-6 at American University. Confirmed presenters include Joan Darling, Bill Svanoe, Claudia Myers, Megan Holley, Sheree Guitar, Jenny Halper, Nina Noble, Peter Hamilton, Monica Lee Bellais, Brigid Maher, Arla Bowers, and others! Script and Pitch Critiques on Sunday, November 6. Special member pricing - [Register online](#) or [click here to download the registration application](#) today!

[View our schedule of classes here!](#) Want to know more about the classes? [Click here for class descriptions!](#)

Double Exposure Film Festival - October 6-8

Double Exposure, a project of the investigative news organization [100Reporters](#), celebrates the finest new films inspired by the investigative instinct. It combines film screenings for the public with a professional symposium for working journalists and visual storytellers. The symposium



gives reporters and directors an opportunity to learn from and connect not only with each other, but with producers, editors, funders, and experts who can advance their work. The second edition of Double Exposure is coming to The National Press Club, October 6-8, 2016.

Use WFV10 to receive a 10% discount on tickets [here](#).



What's Up? Docs!

What's Up? Docs! - hosted by The Documentary Center at GW - is a **new, thought-provoking monthly series of documentaries** curated in a way that only one of the top university documentary programs in the nation can offer. Each screening is followed by a Q&A with a noted author, scholar, film critic, film director, or documentary forward-thinker who will lead a discussion that will go beyond what a film is about to what it means in the larger historical and social

context.

Our inaugural fall season, **Roots: Films That Defined the Documentary Form**, focuses on films that defined the documentary form. Those remaining in the series include:

PRIMARY (10/13) with Special Guest Emmy and Peabody Award-winning political documentary filmmaker Prof. Paul Stekler

GIMME SHELTER (11/10) with Special Guest Music Critic Mark Jenkins

THE TIMES OF HARVEY MILK (12/8) (LGBTQ) with a Special Guest TBA

Films are screened from 7:00 - 9:30 p.m. every second Thursday at The George Washington University Cloyd Heck Marvin Center Amphitheater (third floor) located at 800 21st Street NW, Washington, D.C.

Both seasons passes and individual tickets are now on-sale! **Members of WIFV receive a special discount rate on admission to this one of a kind crash course in non-fiction film.** Simply enter "docs" (without quotation marks) where directed when purchasing in order to receive your discount.

[Purchase your seasons pass and individual tickets now!](#)

CINE PitchFest Presented by A&E: Be Original



Ann Marie DiNardo
at PitchFest 2015

WIFV is a proud partner of *CINE PitchFest Presented by A&E: Be Original* and *CINE Celebrates: Washington, DC*. Presented by CINE, these events are designed to provide connections and opportunities for members of the Washington media community - and WIFV members get discounts for exclusive access. Both events will be at NYU Washington DC, 1307 L Street, NW.

CINE PitchFest Presented by A&E: Be Original

Do you have an idea for the next great TV show? Get a crash course in how to pitch it at *CINE PitchFest presented by A&E: Be Original*. On **October 18 at NYU Washington DC**, from 6:00 to 7:30 pm, five independent producers will pitch ideas to A&E executives, local network reps and professional filmmakers. Listen to the pitches and the panelist critiques - and learn what makes a good pitch and what networks are looking for. Post-session Q&A.

Projects being pitched in DC on October 18 are:

Joseph Daniel

SAVING PLACES (Unscripted Series)

Tre Ferguson

BOSS AND KODIAK (Unscripted Series)

Dale Scott

ROOKIE PASTORS (Unscripted Series)

Estes Tarver and Joan Darling

MRS. WILDERMUTH (Scripted Feature)

Amy Tasillo and Matt Doherty

EAST COAST GROW (Scripted Series)

General Admission tickets are \$5 for WIFV members with the code cinewifv16 - [purchase tickets here](#). Come early and visit the Samsung VR Lounge and experience 360 content - and stay late to spend more time networking with attendees and panelists.

WIFV Member Monica Lee Bellais will be pitching OCOTILLO at the San Francisco CINE PitchFest Presented by A&E: Be Original on November 10.

CINE Celebrates: Washington, DC

Join us on **October 19 at NYU Washington** from 6:00 to 9:00 pm for *CINE Celebrates*, an exclusive reception that honors and connects the best and most original media makers in the industry. Meet industry executives, 59th CINE Golden Eagle Award-winning media makers, and **2016 CINE Leadership Award honoree Soledad O'Brien**. Visit the Samsung VR Lounge to experience award-winning 360 content. Design your own cocktail at the Enza Prosecco Bar, and treat yourself at CINE's signature popcorn and candy Dessert Bar, featuring treats from Georgetown

Cupcake.

WIFV Members: Save 25% off General Admission or Student tickets (ID required) with the code cinewifv16. To purchase tickets and find out more, visit celebrates.cine.org.

Ramona Diaz Receives Documentary Inspiration Award

Docs In Progress will honor filmmaker **Ramona Diaz** at their Documentary Inspiration Awards on **Thursday, October 20** in Washington DC. The evening will include a master class conversation with Diaz about her career, her approach to documentary filmmaking, and her thoughts on what it means to be a woman and a person of color navigating today's documentary film industry. Following this conversation, we will screen and discuss *IMELDA*, the film which put Diaz on the map.



Diaz is an award-winning Baltimore-based director whose films include *DON'T STOP BELIEVIN': EVERY MAN'S JOURNEY*, *THE LEARNING*, and *IMELDA*. She has also been Executive Producer of several acclaimed films by emerging documentary filmmakers, including *DON'T GIVE UP TOMORROW* and *NOTOWN*. Her upcoming film *MOTHERLAND* will take us into the heart of the planet's busiest maternity hospital. Diaz' films have screened at Sundance, Tribeca, Silverdocs (now AFI DOCS), IDFA, and many other top film festivals, and have been featured on both of PBS' flagship documentary series *P.O.V.* and *Independent Lens*. She is Artist in Residence at Towson University.

Docs In Progress already partners with WIFV on the Documentary Roundtable and is pleased to offer WIFV members a special discount on tickets to this event. WIFV members can get \$10 off regular or VIP tickets to the Documentary Inspiration Awards by using Promo Code DIAWIFV. With the discount, tickets are \$25 through September 16, \$30 from September 17-October 16. After October 17, all tickets are \$50. WIFV members can attend both the awards and the VIP reception with Diaz for \$115. Tickets for both the awards and the VIP Reception are available only through Docs In Progress at docsinprogress.org/dia16



Now in its second year, the Documentary Inspiration Awards are given annually to individuals whose work and contributions to the field are an inspiration to the documentary community. Last year, the awards went to Oscar-nominated filmmakers Marshall Curry and Matthew Hamachek. All proceeds from this event support Docs In Progress, a 501(c)(3) nonprofit organization which gives individuals the tools to tell stories through documentary film to educate, inspire, and transform the way people view their world.

National Media Market & Conference, Oct 23-27

The National Media Market & Conference provides a unique opportunity for producers and distributors of educational media to promote new content and platforms through personal interaction with librarians and other media professionals. The conference offers carefully curated professional development sessions, renowned speakers, and multiple opportunities for informal networking.

Can't be there for the entire conference? The daily rate includes all professional development sessions, access to exhibitor suites (Tuesday and Wednesday), and lunch.

The daily schedule is available [here](#).

We have an exciting line-up of **professional development sessions** to cover many areas of film in the educational environment. **Please check out this year's professional development schedule**. **WIFV members will be especially interested in the 9:00 a.m. session on Tuesday, October 25, 2016 featuring WIFV members focusing on successful educational distribution campaigns.**

The venue for the 38th National Media Market is the historic Embassy Suites Inner Harbor Baltimore. The hotel connects to a renovated historic Masonic Temple right in the center of the Inner

Harbor District. Please visit www.nmm.net for additional information and schedule updates.

Creativity Connects: Trends & Conditions Affecting US Artists

Describing changing definitions of artists and their shifting roles in society are the focus of a new report launched by the Center for Cultural Innovation and the National Endowment for the Arts, with support from the Surdna Foundation and the Doris Duke Charitable Foundation.

The year-long research effort was led by the Center for Cultural Innovation with a national research team of Alexis Frasz, Marcelle Hinand, Angie Kim, Heather Peeler, Holly Sidford, and Marc Vogl. The report is part of the NEA Chairman's 50th anniversary initiative *Creativity Connects: Trends and Conditions Affecting U.S. Artists*, which examines issues familiar to the arts world such as funding and training, but also widens the lens to look at the effect of other forces shaping the environment for artists including technology, the gig economy, student debt, and the growth of cross-disciplinary work. NEA Chairman Jane Chu said, "This report is practical and well-informed, providing insights and implications for action that together can advance our nation's creative future. We thank the Center for Cultural Innovation for their work and look forward to sharing the report with our colleagues and those interested in welcoming artists to their sectors to share their creative practices and inspire innovation."



Report Findings

The report is divided into three sections, each with its own set of conclusions.

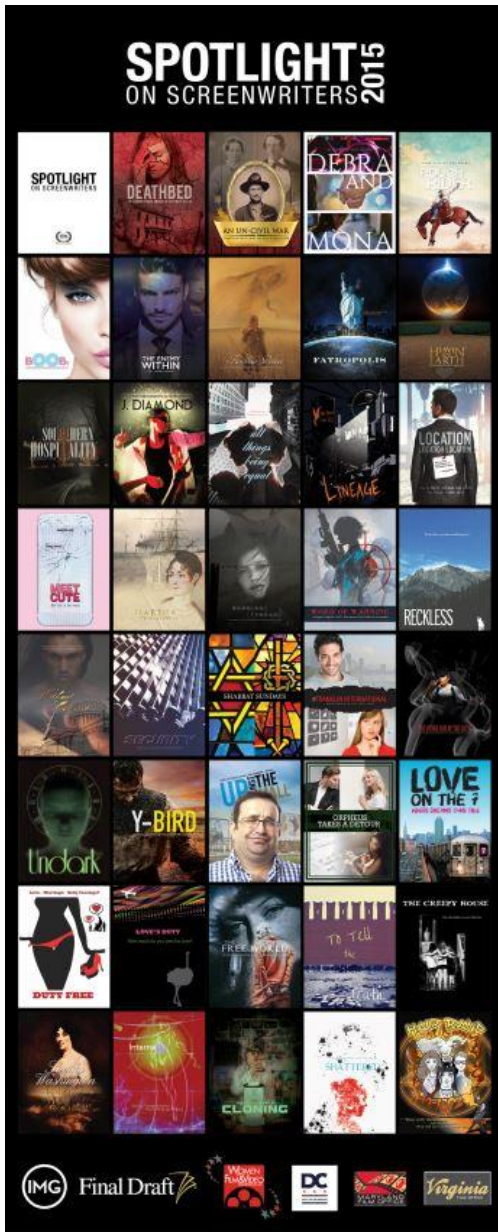
1. Shifts in the Artist Population and the Ways Artists Work
2. Technology, Economics, Equity, and Training
3. Implications of this Research

Regarding the findings of the research, the report describes significant changes that alter definitions of artists, how they sustain their practice, and yet-unrealized potential to contribute positively to social issues and apply creativity throughout all sectors. Specifically:

1. The population of artists is growing and diversifying, with substantial numbers of artists working across disciplines and in entrepreneurial ways.
2. Technology is profoundly altering the context, consumption, and economics of artists' work, and there are emerging new markets and demands for the creative labor market.
3. Artists are part of larger economic conditions that require addressing high levels of debt, rising costs of living, and insufficient protections for "gig economy" workers.
4. Structural inequities in society are reflected in the arts wherein artists also face race-, gender-, income-, and ability-based disparities.
5. Training and funding systems have not kept pace with artists' evolving needs and emerging opportunities for artists' contributions.

Angie Kim, President and CEO of the Center for Cultural Innovation (CCI) said, "The arts sector is not alone in undergoing seismic shifts due to technological, generational, and demographic changes, but many of these shifts have opened up exciting new possibilities for artists to be at the center of social change. The Creativity Connects report describes what needs to be done to expand artists' potential contributions. CCI is proud to partner with the National Endowment for the Arts on this seminal research." [Read more here](#)

Spotlight on Screenwriters - Volume 3



WIFV is delighted to announce that **Spotlight on Screenwriters, Volume 3** is in production! In the last two years, 78 screenplays were introduced to highly-respected, award-winning producers, directors, and financiers. Full screenplays have been requested!

FINAL WORKSHOP for 2016

October 13 - Lights * Camera * Action!

\$20 WIFV Members / \$25 public

[RSVP here](#)

CONTACTS

Monica Lee Bellais, Spotlight on Screenwriters Founder / Editor MonicaLeeBellais.Spotlight@gmail.com

Hillary Shea, Spotlight on Screenwriters Assistant Editor HillaryShea.Spotlight@gmail.com

Volume 3 will be revealed on November 5 at ScriptDC! [Register here](#)

New and Renewing Members

The following joined or renewed their WIFV membership (September 1 - September 30).

Michelle Aguilar
Leslie Allen
Karen Baker
Wayne Barbin
Sara Barger
Soren Begin
Penni Berbert
Anthony Brenneman
Jennifer Brenner
Katrinna Cherre

Joe Fab
Craig Gildner
Jeffrey Hall
Lauren Heinsohn
Christina Helm
Kristen Hildebrand
Rebecca Howland
Amy Johanson
Cathy Kades
Kurt Klaus
Kaitlin Lange

Debbi Mack
Susan Malone
Carolyn McCulley
Lauren Menkes
Maureen O' Grady
Diana Owens
Sheri Ratick Stroud
Melissa Rogers
Christopher Root
Kevin Sampson
Lorrie Smith

Tahja Cropper
Kaylyn Dawkins
Michael Di Salvo
Florence Dwek
Joe Dzikiewicz

Steve Lichtenstein
Bryan Litt
Yael Luttwak
Sandra Lynne

Arlette Thomas-Fletcher
Clarissa Villondo
Betsy Walters
Susan Winchell
Ann Zamudio

Corporate Members:
WILL Interactive

About WIFV

WIFV supports professionals in the media industry by promoting equal opportunities, encouraging professional development, serving as an information network, and educating the public about women's creative and technical achievements.



Send Stories to:

Women in Film & Video
4000 Albemarle Street, NW
Suite 305
Washington, DC 20016
202-429-9438
director@wifv.org
www.wifv.org



Volunteer. Donate. Review.

Support Women In Film & Video Inc.

When you shop at [smile.amazon.com](https://www.amazon.com/smile), Amazon donates.

[Go to smile.amazon.com](https://www.amazon.com/smile)

[amazon smile](https://www.amazon.com/smile)



Blackmagicdesign



WIFV is grateful for the annual support of these [companies](#) and our [corporate members](#).