



# WIFV NEWS

## Special *Lunatic Fringe* Edition



This special edition chronicles many of the WIFV members who have been involved in a year-long mentorship project to develop a webseries pilot. The results of their work, *Lunatic Fringe*, will be shown at the WIFV Holiday Party on January 15. More details soon. In the meantime, we are so grateful for the

expertise and enthusiasm the people highlighted below brought to this project!



The project could not have happened without the generosity of Interface Media Group and Irving Russo, owner of the Elements Salon in McLean.



**Jax Baires-Diener**, is a freelance bilingual producer based in Arlington, VA. Her current video projects are a collection of live performances including: music, dance + sketch comedy. She is editing a youth talent show and is developing a short video

piece highlighting trends in pre-fab & micro-housing along with the communities that embrace them. As a crewmember of the Lunatic Fringe team she often traded hats to serve as grip, make-up artist, and assist the art department with preparing location as a set and returning it back to its previous glory. At a given time you can find her collaborating with fellow producers @ Arlington Independent Media or rolling with her Washington DC Comedy Writers Group amigos at Restaurant Judy in DC.



**Alison Bauer**, production assistant and orange-haired actress. was thrilled to learn the behind camera details from the generous WIFV mentors. Her current projects are now in serious need of schooling, so this winter find her in class at AIM or Speakeasy DC.



When **Sandra Brennan** isn't helping friends make short films, she spends a lot of time in the trenches of educational media production. For many years, Sandra has produced and directed distance learning television, online professional development training and digital media resources for the K-12 community. Sandra's work is Emmy nominated, Telly

recognized and accessed through Fairfax County Public Schools' Fairfax Network and iTunes U.



**Lynda Bowler** was born in New Zealand, married her childhood sweetheart and moved to Annapolis for his yacht design business 30 years ago. She traveled and worked in several countries, modeling and working in the fashion industry in London and sequed into an interest in the Arts, including involvement in children theater activities, doing

costumes and whatever needed a helping hand. Ten years of Background experience has seen her working in a variety of movies, industrial productions, TV commercials and shows including most recently VEEP and House of Cards. Bowler's involvement in Lunatic Fringe has been a pleasure and given her an insight to the process of video production with a fantastic group of creative people willing to share their skills and experience.



Associate Producer **Faith DeVeaux** is the author of *When Duty Calls*

DeVeaux has worked in the entertainment business at a record company, a film distributor, a music licensing company, and an animation company when she lived in

Los Angeles, CA. When she wasn't knee deep in film work, DeVeaux has volunteered for the WIFV Gala, Silverdocs, and DC Shorts. She has also taken courses through UCLA and AFI, and crewed on productions, including student films from AFI and CalArts. To contact DeVeaux, email her at [fai29@aol.com](mailto:fai29@aol.com).

, the writer/producer/director of dramatic shorts, *The Visit* and *Life and Time*, a no-budget feature, *friends4ever*, and of the upcoming WWII feature-length documentary *Double Victory: Two Warriors in the Fight for Civil Rights During WWII*.



**Trystin Kier Francis** served as Production Designer for *Lunatic Fringe*. He is Principal and Chief of Design for the Trystin Kier Company, a unique creative arts design firm based in Washington, DC. The firm specializes in Interior Design, design education and oftentimes designs

wedding and event spaces. The Trystin Kier Company also owns a subsidiary Production Company, the BRUNALI of Artists, a vehicle for Trystin's growing career in television as a celebrity Interior Designer.



**Victoria Buksbazen** - With a background predominantly in writing, Victoria came into the world of WIFV by attending a BlueCat screenwriting workshop at Interface Media almost three years ago. In the past year, her feature-length script, *El Rabanito - The Radish Baby* placed in

competitions through the Austin Film Festival, BlueCat, IFP, the Screenwriters Colony (in Nantucket) and was an Official Selection at the Oaxaca FilmFest. *Lunatic Fringe* was Victoria's first experience crewing a video production and she thoroughly enjoyed being a PA and assisting with lighting, makeup, set construction, continuity photos, background work, stand-in, HECK, whatever was needed! Victoria is currently in pre-production on a short documentary about a radish festival in Mexico.



Originally from Miami, Florida, **John Di Giacomo** is a recent graduate of Dodge College of Film and Media Arts in Orange, California where he specialized in sound design. With more than a dozen shorts' worth of experience as sound mixer, boom operator, Foley artist, voiceover artist, dialogue editor, sound designer, language consultant, and re-recording mixer, John is a sound specialist

in almost every sense of the phrase. Over the past four years, John has also gained experience in international work, serving as sound mixer and sound designer to a Taiwanese-American co-production, interning in Spain, and studying in Italy, where he independently produced a short podcast. Drawn to the east coast by the allure of working in public radio, John found Women in Film by serving as one of the sound mixers and boom operators for *Lunatic Fringe*. Though this is his first production on the east coast, he looks forward to working with various members of the east coast film and Women in Film communities.



**Sali Gelestino** is a recent member with WIFV, and sustaining member with AIM (Arlington Independent Media). A Washington, DC, native, she began as a photographer many years back, but took a break to raise her family. Her path took a few turns and eventually she found herself working in video. While her passion is working behind the camera, her most recent credits include: Unit

Production Manager on *Geographically Desirable* (a feature length indie release from Nextnik Films, currently in post with an anticipated release in Spring of 2014); AD on *The Landlord* (a short film musical thriller, produced through

He is among Washington movers and shakers as the "48 Hour Designer" for his 2010, rapid redesign of current DC Mayor Vincent Gray's Executive Office Suite. He is a recipient of the Envest Foundation's 2013 "40 under 40 Awards", the winner of the *Washington City Paper's* 2013 "Best Interior Designer" and Radio One's 2011 "30 under 30 Award". He will appear on episode three of the second season of the Oprah Winfrey Network's reality docuseries *Raising Whitley*. Trystin is also a philanthropist with a focus on working and giving to several charities and organizations.



**Martha Karl** is a local actor who pitched in on casting the *Lunatic Fringe* project, and appreciated having the chance to see what auditions are like from the other side of the table (quite the eye

opener). Martha works at the Actors' Center as Member Liaison (Want actors for something you are filming? She'll post that for you on the members only page of their website!). Recently Martha enjoyed being one of the readers for Script DC and worked on medical school training, portraying multiple standardized patients in a variety of scenarios - each with one with its own array of problems - and she is ready to apply the ailments to any role coming up. For fun, she helped coach high school students at a local high school in preparation for their production of *Les Miserables*.



**Brittany Martz** portrays "Bex" in *Lunatic Fringe*. She has been acting professionally for 8 years and is currently filming Seasons 3 and 4 of *Malice the Webseries* in which she stars as "Alice Turner". Look for her this spring as "Cinderella" in NextStop

Theatre's production of *Into the Woods*.



**Robin Noonan-Price** - My role on *Lunatic Fringe* was co-producer & director. As producer, I coordinated mentees and mentors, scouted out a location, worked with the casting director to audition talent, worked with the DP regarding equipment

needs, worked with the set designer, assembled a top notch volunteer crew, and worked with the WIFV director regarding craft services. At times, I felt as if I was juggling many balls in the air and at any moment they were going to fall. But, even when they did fall (a

AIM, currently in post); Editor on *Senior Living In Alexandria* (a new half hour monthly series produced through Senior Services of Alexandria and AIM). In addition to the Editing she is doing for *Lunatic Fringe*, she is in production on a short film and looking forward to continuing work on 2 other personal projects (two different documentaries) in 2014. [shortfilmmusical@gmail.com](mailto:shortfilmmusical@gmail.com)

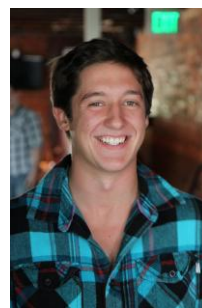


**Zhibo Lai** - I got my start in filmmaking in Paris through the NYFA crash course. After being bit by the bug, I decided to take a career change from my IT job and pursue film. I worked on numerous 48hrs, shorts, docs, and feature films in the DC area, in all aspects of production and post. I eventually found my love in VFX, cinematography,

directing and camera work and have founded my company Dimension FX to cater those services.



On *Lunatic Fringe* **Hayden Livesay** plays "Blake", Bex's handsome boy toy. His other recent work includes principal roles in a Toyota commercial, a Baltimore Gas & electric commercial, an industrial film for the military, and playing "Johnny Brewer" in *Capturing Oswald* which airs in November on the Military Channel.



**Matt Mahaffey** - In *Lunatic Fringe* I played the lovely Rosie. I heard about the role through a friend who worked for Kimberly Skyrme Casting because he had seen a comedy skit in which I was dressed as a woman. The bulk of my other work is spent doing standup comedy and in comedic acting. I am part of a 6-man group known as "Color Me Funny" who are based out of Baltimore; we run 10 comedy shows a month, write

and produce our own short films, and regularly create promotional videos for local events.

Aside from the acting and performing I do within my comedy group, I have been on the set of *House of Cards*, performed in other comedy related projects, and recently I was able to play a small roll in a spin-off movie from a Malaysian television series!

It was a pleasure working with everyone on *Lunatic Fringe*! The chemistry was excellent and I felt a lot of creativity being expressed and received with little pressure involved to achieve our goal.

lead actor dropped out on week prior to filming, a costume designer could not complete the costumes), we managed to work together as a team, problem solve and find solutions. As a director, my role was to take the vision of the writers into consideration, and then work with my actors to make the words on the script page come alive. After two long, but very productive days of filming, we had completed phase 2 of the production. Now it is on to phase 3, which is post production in which I will be working with the editor to finalize the project. I was so grateful to have worked with an incredibly talented and supportive group of individuals.



**Ned Read**, who plays "Mr. Parker" in *Lunatic Fringe*, has recently played "Dad" in *Spiral*, a Mirandum Pictures short film in post-production, and will be playing "Suited Man One" in *What I Deserve*, a student thesis film directed by a GMU senior. He has also just completed an on-camera acting class with Delaney Williams, and is a graduate of the Studio Theatre Acting Conservatory. His

recent stage credits include "Morvan/B" in Samuel Beckett's *Rough for Theatre II* with Arcturus Theater Company, and he has played numerous roles in script readings for DC Shorts, the Playwrights' Forum, and WIFV.



**Shoshana Rosenbaum** is a writer and screenwriter, photographer, educator and yoga teacher. Her work in K-12 education involves urban public school reform. Stay tuned for her first short film, coming in 2014, *The Goblin Baby* -- the script was a finalist in the 2013 DC Shorts Film Festival Screenplay Competition.



**Kelly Schwartz** played the role of the bitchy salon owner "Jenny" in *Lunatic Fringe*. She is originally from Dallas, Texas and has always loved acting from a very young age. After college, Kelly took a break from performing and moved to the East Coast where she earned her MBA and became a management consultant. However, she found herself constantly daydreaming about

acting and decided to once again pursue her dream. Since then, Kelly has landed roles in various commercials, TV shows, movies, films, and commercial print. Most recently, Kelly wrapped a commercial shoot for Moen and in upcoming work she is filming a web



**Maureen Offutt** - I am one of the co-writers and creators of *Lunatic Fringe*. Heidi Willis and created the characters and it was so much fun finding the actors that brought them to life. We are so fortunate to have such a wealth of talent in DC. I was amazed at how incredibly giving people have been with their time, their knowledge and themselves. It takes a village to make a production and we were so fortunate that so many talented

people were willing to make this happen. It all starts with a story and I would be remiss if I didn't thank Heidi for being a great friend and working it through, there were many rewrites. This was a mentoring program and Allison Abner is our mentor and with her experience having written many TV series she brought so much to our story. I can honestly say I learned so much from her and can't thank her enough!



**John Rowles** - I own and operate J4 Music and Composition, LLC (J4MC) in Herndon, VA. Over the last 3 years, I've scored more than a dozen short films, two web series, a nationally syndicated radio show, a few public access television shows and three independent feature films. The greatest joy I get from music is the constant challenge of coming up with original melodies and arrangements. Seeing the final product

on a movie screen along with hearing the music through the surround sound in a theater is always a rush and a great feeling of accomplishment. Looking towards the future, I hope to continue the success of J4MC and tackle new genres.



**Diane Williams** is a native Washingtonian raised in Fairfax County and the US Virgin Islands. By day, she tries to stay employed as a technical writer, mostly with government contractors. By night, she works on a feature film script about her ancestor who was a privateer during the War of 1812. And on the weekends, she makes short films. *Lunatic Fringe* is her 10th short-film collaboration in the past

three years. Diane's short video *When Was the War of 1812?* -part documentary, part quiz show-was created as a fun way to learn something about the War of 1812 for all ages. She has presented the video at the 2012 Women in Film and Television International Summit and Script DC Conference, the 17th Annual War of 1812 Symposium in Baltimore, the 40th Annual DC Historical Studies Conference, and for the Alexandria/Mt. Vernon Antiques Club. Her participation in *Lunatic Fringe* included set decoration, still photography, slate, and editing mentee.

series called *Drakul* and a commercial for Patient First. For more about Kelly you can visit her website: [www.kellyrschwartz.com](http://www.kellyrschwartz.com).



**Mary Suib** - As to my work, I delight in doing both film and stage projects. During the past month, I was involved with three Indies, a web series, a horror feature, an industrial, performed three short plays and directed another, read spooky poetry and voiced the role of "Giant" for a production of *Into the Woods*. In January, I begin rehearsals for "Queen

Margaret" in *Richard III*.



**Kay-Megan Washington**, "Norma" in *Lunatic Fringe*, is a Baltimore native who started performing at the age of two when her parents put her in dance classes in the hope it would make her more graceful. It didn't. After years performing with the Columbia Center for Theatrical Arts, Baltimore Actors Theater, Onstage Productions and the

Princeton Triangle Club, she took a break to focus on graduate school and establishing a career. The acting bug returned as the result of a drunken promise to a friend to come with him to audition for Silhouette Stages' production of *Avenue Q* that led to her being cast as "Lucy the Slut". Since then, she has appeared on stage with the Baltimore Rock Opera Society, Yellow Sign Theatre, Howard County Summer Theatre and Salt Luck Arts, in several short films and as a background player on television, including *House of Cards* and Investigation Discovery. *Lunatic Fringe* has been a wonderful opportunity to work with highly talented women (and men) who are working to make the visions in their heads a beautiful reality.



**Keri Williams** - "WIFV" an unstoppable force on the set of *Lunatic Fringe*. Everyone working and supporting each other's crafts. An eyelash here or lipstick there ... And not a hair out of place! We came together in a fun atmosphere and produced our cute li'l show but why does it have to end? I'm all in for installment 2!



Production photos provided by Shoshana Rosenbaum, Diane Williams, Keri Williams



WIFV is grateful for the annual support of these companies and our corporate members.

Just a reminder that you're receiving this email because you have expressed an interest in Women in Film & Video. Don't forget to add [director@wifv.org](mailto:director@wifv.org) to your address book so we'll be sure to land in your inbox!

### About WIFV

WIFV supports women in the industry by promoting equal opportunities, encouraging professional development, serving as an information network, and educating the public about women's creative and technical achievements.

### Contact Us

Women in Film & Video  
3628 12th Street, NE  
Washington, DC 20017  
202-429-9438  
[director@wifv.org](mailto:director@wifv.org)  
[www.wifv.org](http://www.wifv.org)

### Send Stories to:

[director@wifv.org](mailto:director@wifv.org)

