



WIFV NEWS

Summer 2016

President's Message



This month's message is a "Hail and Farewell" to celebrate those coming to and departing from the Board of Directors for Women in Film & Video. It is a time to thank people for their service, and welcome new members onto the board. We are grateful for the service of **Yolanda**

Arrington, Monica Lee

Bellais, Susan Bodiker, Nutan Chada, Kathy Dismukes, Amy Johanson, Bannon Preston, and Betsy Royall. They have served WIFV Members for a combined total of 25 years! We are welcoming **Julie Allen, Woryeneh Benson, Faith DeVeaux, and Robin Noonan-Price** to the board. [You can see the full 16-17 WIFV Board Roster here.](#)

Along with having individual conversations with new board members, I've spent time reviewing our goals and plans from last summer's strategic retreat to see how we're doing. Below are some highlights from the last twelve months.

At my first official WIFV meeting as President, I held the Oscar that Catherine Wyler's father received for his outstanding direction of **BEN HUR**. Shortly afterwards, I was holding the **DC Mayor's Arts Award for Excellence in Service to the Arts**. It wasn't the first time WIFV had been nominated, but there was an audible gasp in the audience when we received this prestigious award. Emmy-award winning Rosemary Reed of Double R Productions was taping the ceremony, so video of my acceptance speech went viral the next day. A few weeks later, Executive Director Melissa Houghton was honored with the first-ever **TIVA Community Partner Award** at the French Embassy as part of the Peer Awards program. Our community applauded, and also made sure WIFV enjoyed another year as a **Top-Rated Non-Profit** through online reviews and ratings at Great Nonprofits.

In This Issue

[Roundtable Round-Up](#)

[2016 Seed Fund Grants Announced](#)

[New Members of WIFV Advisory Committee](#)

[WIFV Member Coffee - July 26](#)

[Women-directed Films on Netflix](#)

[Line Producing: Pre-Prod & Budget Master Class - July 19](#)

[#GalsnGear - A Night of BlackMagic - July 21](#)

[Location, Location, Location! - July 26](#)

[Happy Hour - August 4](#)

[KitSplit is Serious about Insurance](#)

[EFF Names New Director](#)

[Spotlight on Screenwriters Important Dates](#)

[ROI for Women-Made Films](#)

[National Film Registry - Support WIFV Nominations](#)

[New and Renewing Members](#)

Roundtable Round-Up

Makeup/Hair Roundtable -

Connecting Beauty, Wellness, Better Health & Engaged Learning

July 18, 6:30 to 8:30 pm

Interface Media Group, 1233 20th St, NW

[RSVP here](#)

Screenwriters Roundtable - *First Five Pages*

July 25, 6:30 to 8:30 pm

Interface Media Group, 1233 20th St, NW

[RSVP here](#)

2016 Seed Fund Grants

Thanks to the generosity of WIFV Members, the first Seed Fund Grants for Documentary Filmmakers

have been awarded to **Katie Lannigan** and **Kimberly McFarland**. Each filmmaker will receive a \$2500 grant to help with the research and development for their respective films, **THE LAST DAYS OF BROOKLAND MANOR** and



WIFV not only received, but also gave awards. **Women of Vision** honorees **Joan Darling** and **Dawn Porter** received their awards at George Washington University on November 12th, and were interviewed bright and early the next morning on W-USA9's GREAT DAY WASHINGTON. Not satisfied with those appearances, they were both speakers at the ScriptDC conference that same weekend. The second edition of **Spotlight on Screenwriters**, founded by Monica Lee Bellais, also launched at the conference, and was immediately in the hands of prestigious speakers like Oscar winners Agnieszka Holland and Tom Schulman.

WIFV Advisory Committee Member Amy DeLouise took the lead in developing **#GalsNGear**, a pop-up event that brings professional women who excel in the technical side of media production to some of the foremost media conferences. WIFV proudly launched **#GalsNGear Live!** event at **NAB Show 2016** in Las Vegas, live-streamed by *Broadcast Beat Magazine*. If you couldn't make it to Vegas, you can attend a **#GalsNGear** evening of *BlackMagic* at Interface Media Group on July 21. This national initiative is just getting started!

After launching a fundraising campaign in WIFV's 35th Anniversary Year, the **Seed Fund for Documentary Filmmakers** made its first grants this year! From Giving Tuesday to the 31 for 31 campaigns, board member Kathy Dismukes ensured that we kept the Seed Fund top of mind. Two filmmakers, Katie Lannigan and Kimberly McFarland, were selected by the Seed Fund Review Committee to receive inaugural grants. See related article. Each filmmaker will receive a \$2500 grant to help with the research and development for their respective films which share a theme of community - an appropriate topic for grants that are funded by WIFV members!

The WIFV community is one of the most passionate and engaged groups of people that I've ever known. Your time, energy, and enthusiasm make this organization a success. When members take on the additional responsibilities of a board member, they give back to our community, and help to make our programs, grants, scholarships, and partnerships possible. It's also a tremendous opportunity to grow leadership skills. Last, but not least, none of this would be possible without the outstanding service that Executive Director Melissa Houghton, and Membership/Programming Coordinator Ariel Magno provide on a daily basis. I'm looking forward to another year of celebration and recognition of the very important work that the narrative and documentary media

PYRAMID ATLANTIC - THE STATE OF THE ARTS. Both films share a theme of community, an appropriate topic for grants that funded by WIFV members!



THE LAST DAYS OF BROOKLAND MANOR by Katie Lannigan follows the work of Ms. Minnie Elliot and Ms. Dorothy Davis who have made Brookland Manor their home for more

than 50 years between them as they rally their community to preserve affordable housing in a rapidly gentrifying city and with imminent redevelopment knocking at their door. The WIFV Seed Fund will support a fundraising trailer and initial production.



PYRAMID ATLANTIC - THE STATE OF THE ARTS by Kimberly McFarland will tell the bittersweet story of the Pyramid Atlantic Art Center as it moves out of a community that broke faith with it and into a community that is supporting the arts as an economic development strategy. The WIFV Seed Fund will support research, story development, and equipment.

Thanks to the Selection Committee Members - **Rebecca Bustamante, Phylis Geller, Frances Hardin, Karen Whitehead, Katherine Wilkins De Francis, Brigitte Yuille, and Ann Zamudio** - for their review and ardent support of the grant proposals.

New WIFV Advisors!

The WIFV Advisory Committee comprised of former Board Members and Presidents welcomed the following new members - **Susan Barocas, Monica Lee Bellais, Karen Thomas, Barbara Valentino, and Donna Woolf**. [You can see the full Advisory Committee roster here.](#)

These women serve as valued advisors to the WIFV Board and Staff.

WIFV Member Coffee

Monday, July 26, 2016
8:30 - 10:00 am
Silver Diner

communities are doing in the DC metro area.

Changing media one story at a time,

Rebecca

12276 Rockville Pkwy, Rockville

Dutch Treat

[RSVP here](#)

The picture says it all!

Searching for women-directed films? [Find them here.](#)

FILM
FATALES
NETFLIX



These programs are supported by the Gem Star Foundation, BlackMagic Design, Media Central, and WIFV. Interface Media Group provides the venue for many WIFV campfires, story circles, and fun gatherings throughout the year!

Line Producing - Prep & Production

July 19, 2016, 6:30 to 8:30 pm

Interface Media Group, 1233 20th Street, NW (Dupont Circle South Metro)

\$15 WIFV Members; \$30 Public

[RSVP Here](#)

This program will focus on prep (pre-production) and production. Prep is 80% of any successful shoot and the remaining 20% of time is trouble shooting during the production period! The main focus of the line producer's job is tied closely to the project's financials and handling budgetary issues and they are a focus of this presentation. **Alison Rosa** and **Audrea Topps-Harjo** have worked on nearly 100 productions, including several Summer blockbusters! They've even suggested a Summer reading list that you can see when you register.

#Gals 'n Gear - A Night of BlackMagic

July 21, 2016, 6:30 to 8:30 pm

Interface Media Group, 1233 20th Street, NW (Dupont Circle South Metro)

\$15 WIFV Members; \$30 Public

[RSVP Here](#)

Carla Sandy, of local authorized Blackmagic Design reseller Sandy Audio Visual, will demonstrate the world's lightest Super 35 digital film camera - the URSA Mini 4K - a lightweight miniaturized URSA featuring an incredible 4.6K Super 35 image sensor with a massive 15 stops of dynamic range! The super compact and lightweight design is perfectly balanced for handheld use and comfortable enough for all day shooting. You can select from four models of URSA Mini with 4.6K or 4K image sensors and either EF or PL lens mounts. Time permitting, there will be a hands-on demonstration of the URSA workflow with the inexpensive ATEM line of switchers the URSA's novel ability to transform into a television studio camera. Every campfire should have some magic!

Location, Location, Location!

July 26, 2016, 6:30 to 8:30 pm

Interface Media Group, 1233 20th Street, NW (Dupont Circle South Metro)

\$15 WIFV Members; \$30 Public

[RSVP Here](#)

Joseph Martin, Ray Williams, and Debbie Dorsey are coming from "camps" around the region to help you learn how to track the perfect location for your film. They will share what should you be looking for in a location to maximize your day and story. They may even share what locations require the most paperwork and which are "easy"! This is a great program for producers and directors to learn why they should work with location managers and how to maximize that relationship.

If you registered for this program on its original delivery date, we have you on our camper's list! Questions? Email the Cabin Leader at membership@wifv.org

Summer Happy Hour

August 4, 2016, 6:00 to 8:00 pm

Lost & Found, 1240 9th St NW (Mt. Vernon Square/Convention Center)

[RSVP Here](#)

You deserve a break with friends and Happy Hour specials to ease into August! We're delighted to gather around another campfire and give you that break! It's also a chance to learn more about KitSplit, a new WIFV Member benefit. This may just be the reunion you've been waiting for!

Why KitSplit is So Serious about Insurance

We've all heard those gear horror stories- like that time a careless PA dropped a \$50,000 Red Camera, or how someone forgot to tape down the extension cords and a \$15,000 light toppled over. If you're like us, just thinking about these kinds of gear accidents sets your hair on end and sends you into a paranoid frenzy.

That's why we at **KitSplit** have taken great pains to build a rental system that protects people and equipment no matter what happens. KitSplit is a fully-insured rental marketplace for cameras and related production equipment. If you need to rent equipment, we make it easy and safe with affordable insured gear sourced from people and companies nearby. If you own equipment you can make money safely renting it out when you're not using it.



Based on months of research, the KitSplit insurance plan covers all rentals on KitSplit. Renters are responsible and required to obtain coverage, and we give them three easy options:

1. One Click Equipment Rental Insurance: Our custom-built short-term equipment rental insurance policy is super affordable and you can purchase it instantly, as part of our

checkout process. We built it in partnership with Reiff Insurance, the leading entertainment insurance broker in New York. The insurance is reasonable prices, global, and covers damage and theft.

2. Leave a Full Deposit: If you're on a tight budget you can leave a deposit for the full amount of equipment instead of purchasing insurance. If something goes wrong, we deduct from the deposit.
3. Use Your Own Insurance: If you already have shoot insurance and it covers rented equipment, just send us a COI so we can verify that it covers what you're renting.

Our members are super responsible and professional, so we are happy to report that there have been only minimal damages over the past year and NONE of those gear horror stories. Amazingly we've had no damages above \$150. But accidents can happen, and if they do, whether you're renting equipment or someone is renting gear you own, you are always covered on KitSplit.

You can read more about KitSplit [insurance coverage here](#) or [contact us](#) with questions.

KitSplit 15% Discount to WIFV Members!

We are thrilled to offer WIFV DC members a 15% discount on KitSplit! [Sign up here](#) and use the discount code WIFVDC at checkout.

Culpepper Leads Environmental Film Festival

The Board of Directors of the Environmental Film Festival in the Nation's Capital, the largest and longest-running environmental film festival in the US, announces the appointment of former National Geographic media executive and award-winning independent filmmaker **Maryanne Culpepper** as the Festival's new Executive Director.



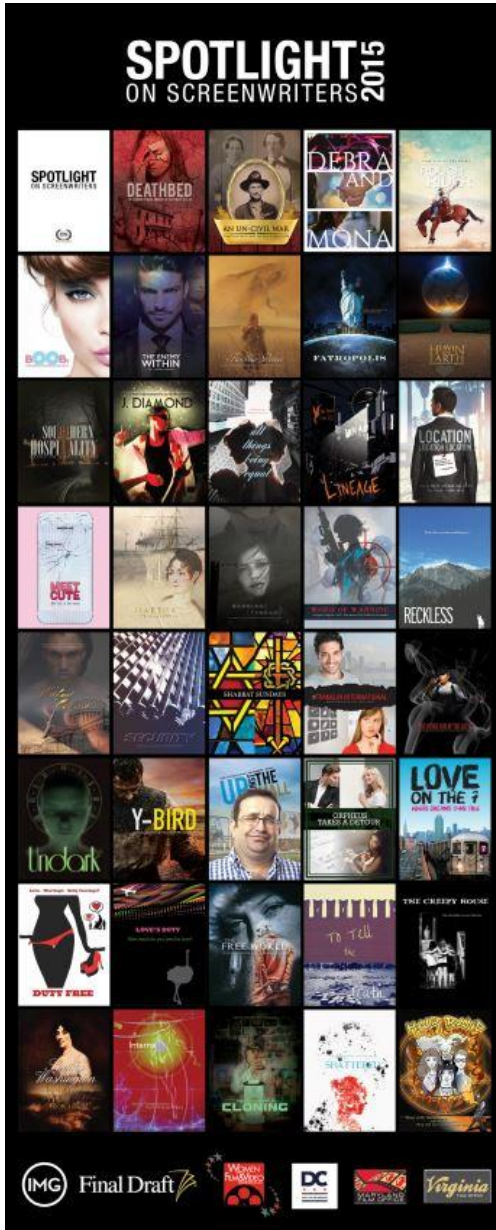
Ms. Culpepper served for 17 years in executive positions at National Geographic Studios and Ventures, is the owner and executive producer of the media company Graffiti Works, and Adjunct Professor and former Shapiro Fellow at George Washington University. She possesses an in-depth knowledge of global environmental issues and organizations and her professional background includes extensive experience in management, fundraising, and strategic planning, as well as film creation and production. A past Board Member of the Jackson Hole Wildlife Film Festival, Ms. Culpepper serves on the Board of the New York Wild Film Festival and on the Advisory Board of Women in Film and Video. She is currently completing production of a natural history film, VAMIZI: CRADLE OF CORAL, about endangered coral reefs off the coast of Mozambique.

"I've been in the audience at the Environmental Film Festival for years and am thrilled to now have the opportunity to step into a role where I can help it grow," said Ms. Culpepper. "I'll be looking for ways to expand the Festival's impact and online presence, engage millennial audiences, and connect filmmakers with opportunities to make a difference in our world." To learn more about Maryanne Culpepper visit www.dceff.org/maryanneculpepper

About the Environmental Film Festival in the Nation's Capital:

Founded in 1993, the Environmental Film Festival has become one of the world's most influential showcases of environmental film and a major collaborative cultural event in the Washington, D.C. area. Each March, the Festival screens a diverse selection of high-quality films chosen to advance public understanding of the environment. Documentaries, narratives, animations, and shorts are shown, as well as archival, experimental, and children's films. The Festival also presents a growing number of year-round programs that complement the main Festival's offerings. The Festival's website, www.dceff.org, serves as a global resource for environmental film throughout the year. The 25th anniversary Festival will take place from March 14-26, 2017.

Spotlight on Screenwriters - 2016 Schedule



WIFV is delighted to announce the deadlines for **Spotlight on Screenwriters, Volume 3!** In the last two years, 78 screenplays were introduced to highly-respected, award-winning producers, directors, and financiers. Full screenplays have been requested!

SUBMISSION REQUIREMENTS

(Screenwriters may submit up to 3 screenplays.)

- * Current WIFV Member;
- * **Signed WIFV Spotlight Agreement;**
- * Completed feature length screenplay (90-125 pages) OR completed television pilot screenplay with episode outline;
- * Proof of Copyright registration;
- * Proof of WGA registration;
- * Screenwriter's biography (300 words);
- * Logline (1 sentence);
- * Short Synopsis (300 words).

SUBMISSION & NOTIFICATION OF RESULTS

- July 15 - Notification of results for 1st round
- July 15 - **2nd Submission Deadline** (\$50 fee)
- August 15 - Notification of results for 2nd round
- October 1 - Catalogue goes to printer
- November 4-6 - ScriptDC and catalogue unveiled!

WORKSHOP SCHEDULE

- August 11 - Headshot Session (For screenwriters selected for volume 3 only) Location TBA
- September 1 - Production Companies
- October 6 - Lights * Camera * Action!
- \$20 WIFV Members / \$25 public
- RSVP at www.wifv.org

CONTACTS

- Monica Lee Bellais, Spotlight on Screenwriters Founder / Editor MonicaLeeBellais.Spotlight@gmail.com
- Hillary Shea, Spotlight on Screenwriters Assistant Editor HillaryShea.Spotlight@gmail.com

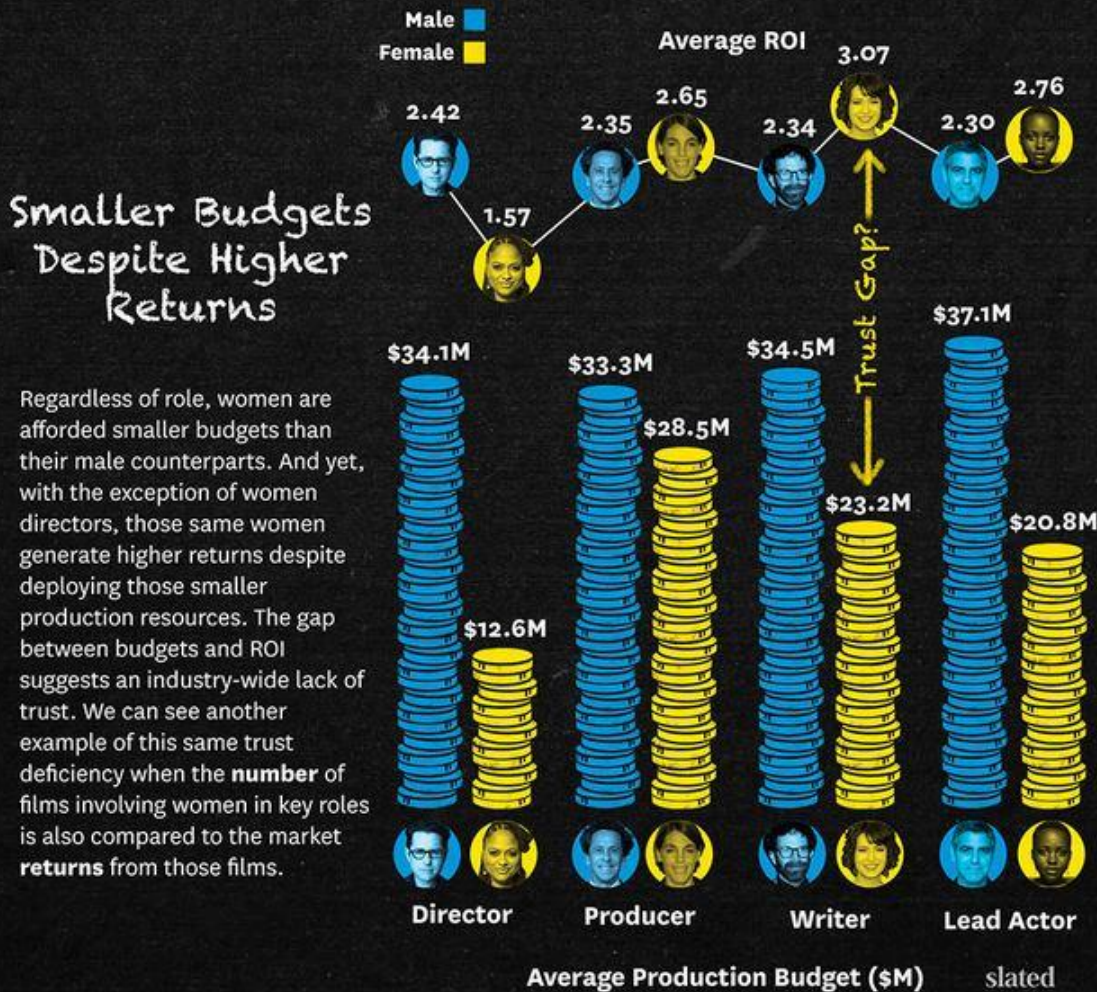
Return on Investment for Women-Made Films

Slated, the online film-financing hub launched in 2012, spent six months analyzing 1,591 features - nearly every movie that was released theatrically on at least one screen in the U.S. between 2010 and 2015. The company found that films produced by, written by or starring women enjoyed a greater average return on investment than those made by men. [More info here.](#)

Return on Investment Formula

$$\text{ROI} = (\text{worldwide gross box office revenue}^*) - (\text{estimated marketing costs as \% of production budget}) + (\text{estimated tax credits/soft money}) \div (\text{production budget})$$

* Gross theatrical revenue is used rather than theatrical rentals primarily because reliable numbers for worldwide TV & video revenue are not publicly available for this dataset. Also, worldwide gross box office numbers have historically been a decent proxy for adjusted gross revenue from all sources.



The Library of Congress maintains the National Film Registry to honor "culturally, historically or aesthetically significant films" that are at least 10 years old at the time of their inclusion in the Registry. The selected films are "works of enduring significance to American Culture." [More information about the National Film Registry can be found here.](#) The Library of Congress has changed how they are accepting nominations this year. [Click here to submit your nomination\(s\).](#) You may nominate each film once and may nominate more than one film.



WIFV encourages you to nominate the following films for consideration by the National Film Registry:

1. THE BIG HOUSE (1930) - written by Frances Marion, edited by Blanche Sewell
2. HE'S ONLY MISSING (1978) - written/directed by Robin Smith
3. PARIS IS BURNING (1990) - written/directed by Jennie Livingston
4. FAST FOOD WOMEN (1992) - written/directed by Anne Lewis
5. SLEEPLESS IN SEATTLE (1993) - screenplay/directed by Nora Ephron
6. BOYS DON'T CRY (1999) - written/directed by Kimberly Peirce
7. WHAT WOMEN WANT (2000) - directed by Nancy Meyers
8. LOST IN TRANSLATION (2003) - written/directed by Sofia Coppola
9. MEAN GIRLS (2004) - screenplay by Tina Fey
10. THE DEVIL WEARS PRADA (2006) - screenplay by Aline Brosh McKenna

Read more about this year's suggested nominations here. They represent a mix of narrative and documentary works and are all women not currently represented in the registry for their work. We've nominated several from the latter part of the 20th century to capture some of the leading lights and well-remembered lines still in use today ("On Wednesdays we wear pink."). Be creative as you make your nominations (you can nominate more than one film but can only nominate any film once) to reflect your favorite films and filmmakers.

Make your nomination(s) by September 2, 2016 and let them know what you believe are the most important examples of American-made moving images! **Click here to submit your nomination(s).** Enter "WIFV" when they ask how you learned about the Registry. If you have questions or want to know more about the Registry, email filmregistry@loc.gov. Questions about this year's WIFV nominations? Email director@wifv.org. Thank you for taking the time to nominate films.

New and Renewing Members

The following joined or renewed their WIFV membership (May 31 - July 11).

John Allen Carol Appleby Alexis Arenas Nick Barker Ivan Basauri Angelina Beltrami Laura Bennett Dennis Boni Jennifer Brown Birgit Buhleier Benjamin Carver Camille Cherry Stephanie Cosby Carlyn Davis David Deutsch Blythe Dohey Peter Dowty Donald Ediger Charles Germain Elizabeth Glass James Gossard Talaya Grimes	Kay Hankins Jack Harris Stephanie Hellerman Piper Hendricks Enrique Huaiquil Keisha Jackson Sam Jaffe Bill Johnson Royal Kennedy Rodgers Christina Ksol Thomas Lawrence Cheryl Little Naa Adei Mante Kim Marie Joseph McGloin Bridget Bell McMahon Kia Meredith-Caballero Leah Michaels Anna Milograno Brett Monk Glenda Nelson Mary Patterson Daniela Perez Frias Charlie Puritano	Craig Rossi Jesse Ryan Karen Ryan Qaddafi Sabree Carla Sandy Shahrzad Sari Ricardo Schuttman Nina Gilden Seavey Dan Sonnett Tracey Thompson Gwen Tolbart Tanya Upshur Kate Wagner Rob Whitt Robert Winship Donna Woolf Julie Ziegler Corporate Members: Carlyn Davis Casting Sandy Audio Visual, LLC The Documentary Center
--	--	--

About WIFV

WIFV supports professionals in the media industry by promoting equal opportunities, encouraging professional development, serving as an information network, and educating the public about women's creative and technical achievements.



Send Stories to:

Women in Film & Video
4000 Albemarle Street, NW
Suite 305
Washington, DC 20016
202-429-9438
director@wifv.org
www.wifv.org



Volunteer. Donate. Review.

Support Women In Film & Video Inc.

When you shop at smile.amazon.com, Amazon donates.

[Go to smile.amazon.com](http://smile.amazon.com)

[amazon smile](http://smile.amazon.com)



Blackmagicdesign



WIFV is grateful for the annual support of these [companies](#) and our [corporate members](#).