



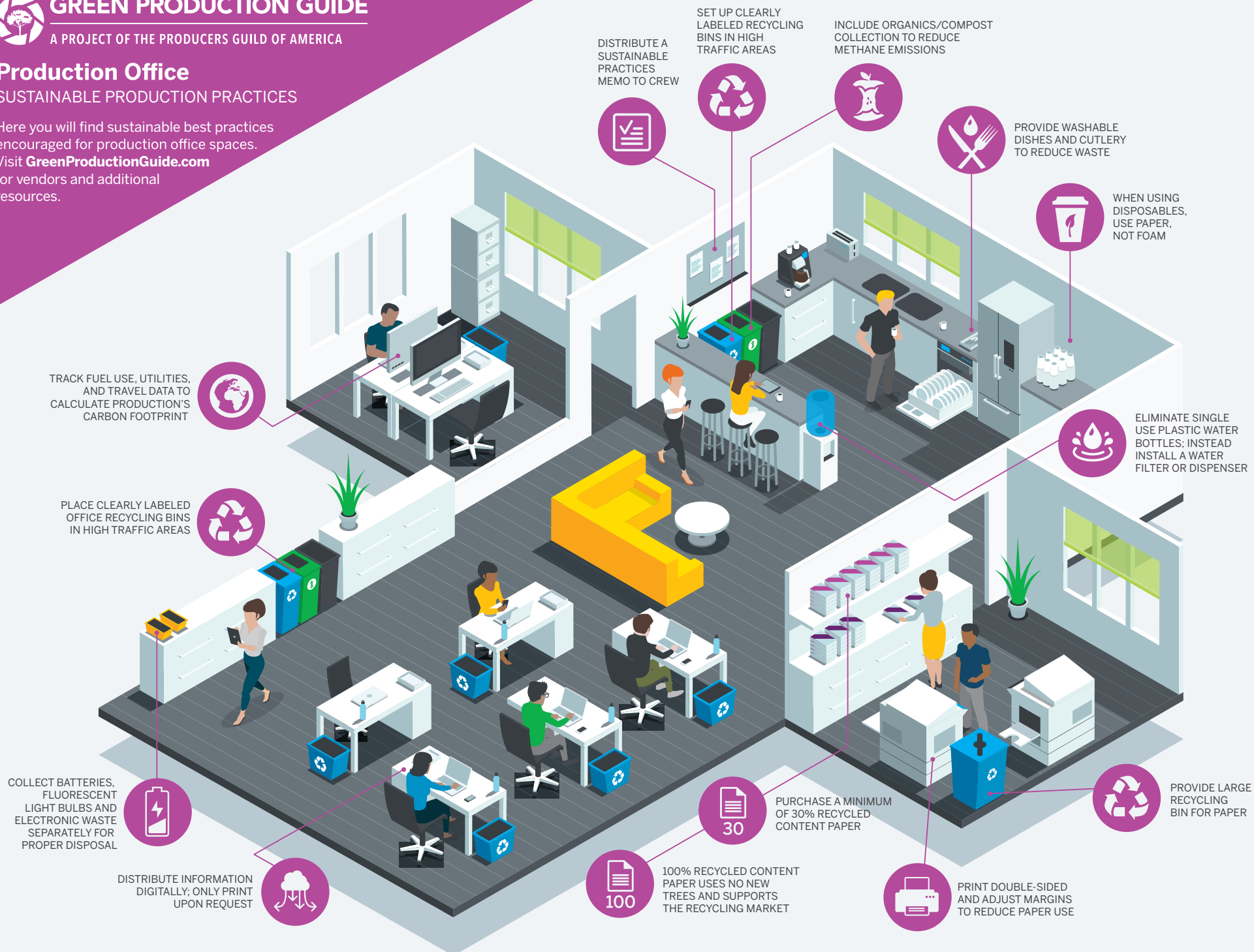
GREEN PRODUCTION GUIDE

A PROJECT OF THE PRODUCERS GUILD OF AMERICA

Production Office

SUSTAINABLE PRODUCTION PRACTICES

Here you will find sustainable best practices encouraged for production office spaces. Visit GreenProductionGuide.com for vendors and additional resources.





GREEN PRODUCTION GUIDE

A PROJECT OF THE PRODUCERS GUILD OF AMERICA

Stages + Construction Mill

SUSTAINABLE PRODUCTION PRACTICES

Here you will find sustainable best practices encouraged for stages and construction mill. Visit GreenProductionGuide.com for vendors and additional resources.

SOURCE USED MATERIALS FOR SET BUILDS AND SET DRESSING

USE LED SET LIGHTING TO REDUCE ENERGY USE AND CREATE LESS HEAT

INCORPORATE SUSTAINABLE BEHAVIORS ON SCREEN

ELIMINATE SINGLE USE PLASTIC WATER BOTTLES FROM WAREHOUSES AND WORKSHOPS

TRACK ORIGIN AND CERTIFICATIONS OF ALL PLYWOOD PURCHASES

USE BUILDING MATERIALS MADE FROM RECYCLED CONTENT OR RENEWABLE RESOURCES

USE FSC-CERTIFIED PLYWOOD FOR SET WALLS TO ENSURE THE LUMBER WAS OBTAINED LEGALLY AND RESPONSIBLY

RECYCLE ALL CONSTRUCTION DEBRIS

PROVIDE WATER DISPENSERS, ENCOURAGE CREW TO USE REUSABLE WATER BOTTLES

SET UP CLEARLY LABELED RECYCLING BINS AT CRAFT SERVICE AND KEY AREAS ON SET

DONATE LEFTOVER FOOD FROM CATERING AND CRAFT SERVICE TO A LOCAL NON-PROFIT. USE FRIGDES OR FREEZERS TO AID IN THE DONATION PROCESS

ELIMINATE DISPOSABLE FOAM PRODUCTS, USE PAPER INSTEAD

MAKE A CONCERTED EFFORT TO REUSE, SELL OR DONATE ALL LEFTOVER MATERIALS

USE RECHARGEABLE BATTERIES IN WIRELESS HEADSETS TO REDUCE HAZARDOUS WASTE

USE RECHARGEABLE BATTERIES IN MICROPHONE TRANSMITTERS WHEN POSSIBLE

USE HOUSE POWER TO REDUCE GENERATOR USE. TIE INTO ELECTRIC GRID WHEN NECESSARY





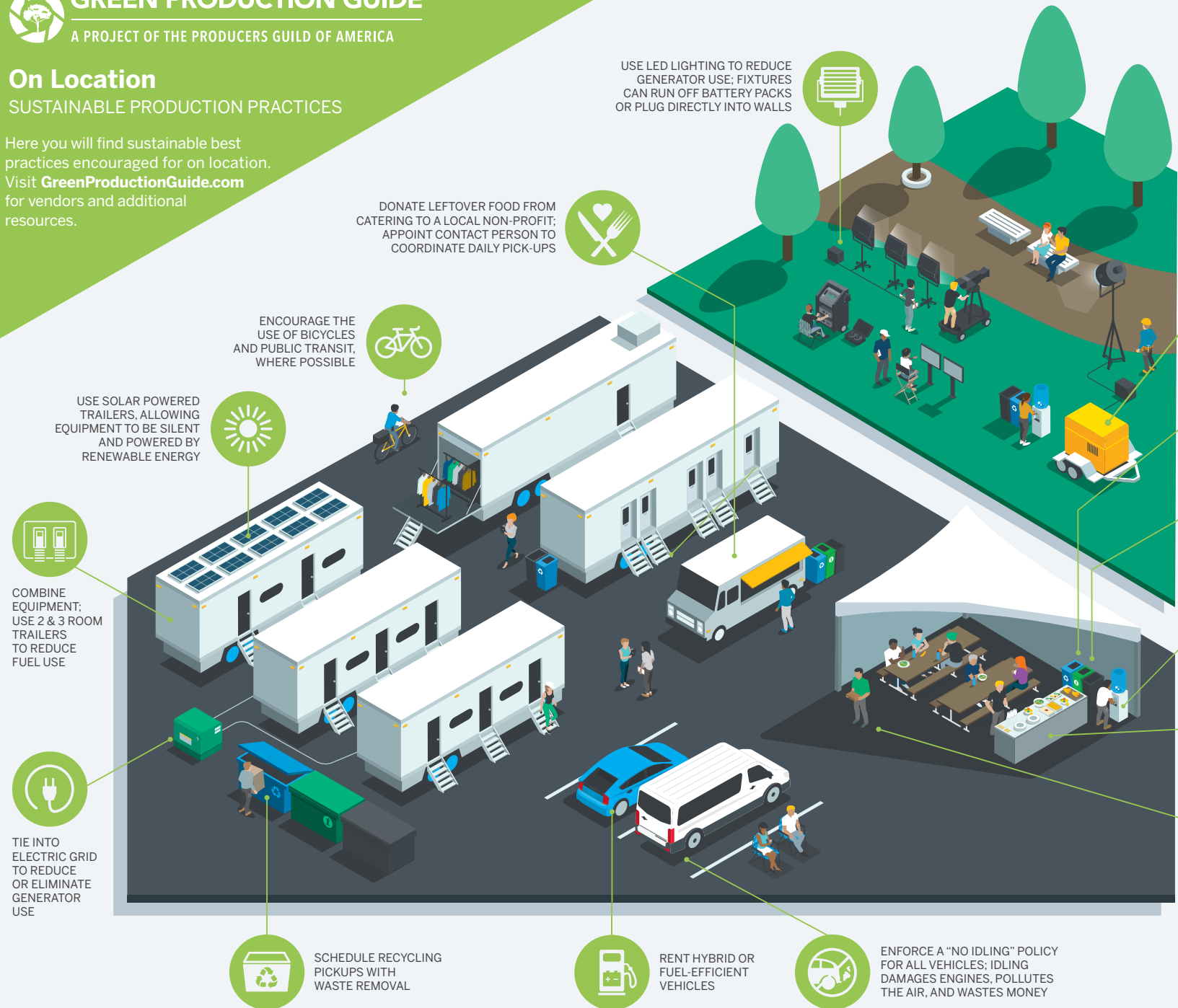
GREEN PRODUCTION GUIDE

A PROJECT OF THE PRODUCERS GUILD OF AMERICA

On Location

SUSTAINABLE PRODUCTION PRACTICES

Here you will find sustainable best practices encouraged for on location. Visit GreenProductionGuide.com for vendors and additional resources.



USE LED LIGHTING TO REDUCE GENERATOR USE; FIXTURES CAN RUN OFF BATTERY PACKS OR PLUG DIRECTLY INTO WALLS

DONATE LEFTOVER FOOD FROM CATERING TO A LOCAL NON-PROFIT; APPOINT CONTACT PERSON TO COORDINATE DAILY PICK-UPS

ENCOURAGE THE USE OF BICYCLES AND PUBLIC TRANSIT, WHERE POSSIBLE

USE SOLAR POWERED TRAILERS, ALLOWING EQUIPMENT TO BE SILENT AND POWERED BY RENEWABLE ENERGY

COMBINE EQUIPMENT; USE 2 & 3 ROOM TRAILERS TO REDUCE FUEL USE

TIE INTO ELECTRIC GRID TO REDUCE OR ELIMINATE GENERATOR USE

SCHEDULE RECYCLING PICKUPS WITH WASTE REMOVAL

RENT HYBRID OR FUEL-EFFICIENT VEHICLES

ENFORCE A "NO IDLING" POLICY FOR ALL VEHICLES; IDLING DAMAGES ENGINES, POLLUTES THE AIR, AND WASTES MONEY

USE BIODIESEL OR OTHER ALTERNATIVE FUELS TO LOWER CARBON EMISSIONS

SET UP CLEARLY LABELED RECYCLING BINS AT CRAFT SERVICE, CATERING, AND KEY AREAS ON SET

INCLUDE ORGANICS/ COMPOST COLLECTION TO REDUCE METHANE EMISSIONS

PROVIDE WATER DISPENSERS TO REDUCE PLASTIC WASTE

REQUIRE CATERING TO PROVIDE WASHABLE CHINA AND CUTLERY

USE PAPER TO-GO BOXES, ELIMINATE FOAM